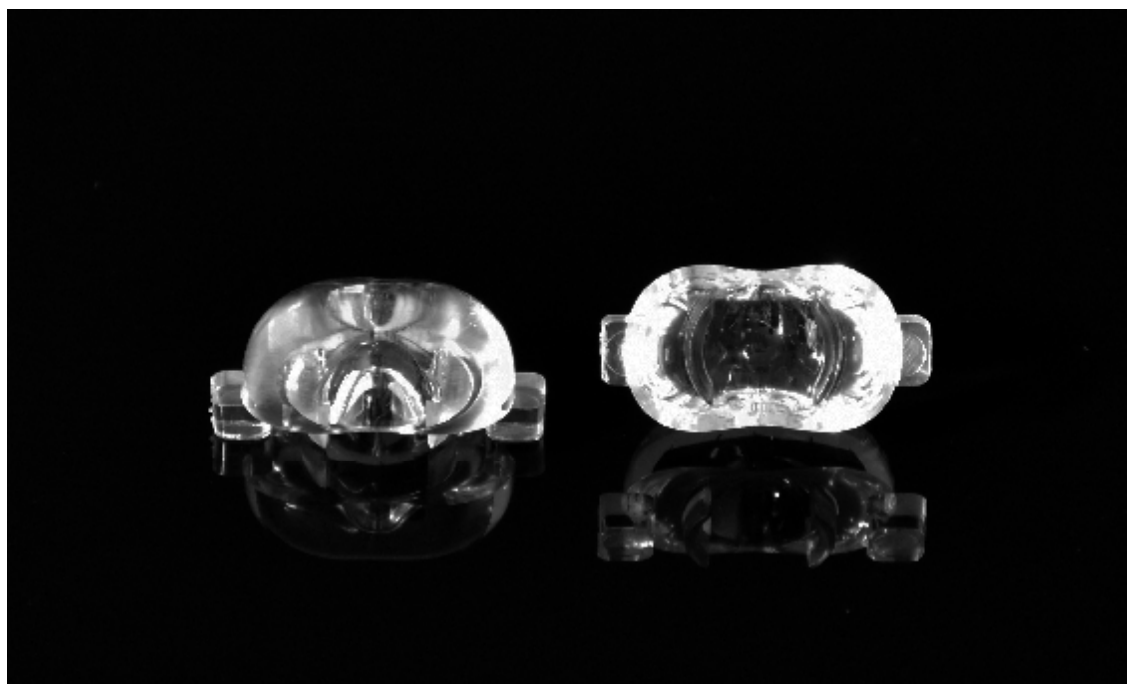




## YML01ED-CF70145H LENS



### PRODUCT DESCRIPTION

#### Features:

- High efficiency >90%
- Available in 1 beam pattern
- Optimized for uniform effects
- Lens material Optical grade PC
- Lens without holder

#### Typical applications:

- Stage Lighting
- Street Lights
- Decorative Light
- Down Light

### TABLE OF CONTENTS

General Information	2
Usage and Maintenance	2
2D Drawings	3
Optical Characteristics (for 1LA5 )	3
Package Information	4
Product Nomenclature	5



## General Information (TJ = 25°C)

- Compatible Led Type:

The YML01CR-CF70145H single lens is optimized for 1LA5 Led <sup>(1)</sup>

- Beam Angle Type:

An optimized profile integrate different front shape enabel the general of one lens model:oval beam (70\*145deg) <sup>(2)</sup>

- The Way to Assembly:

The lens should be assembled to the PCB board or MCPCB upon LEDs which provides the most appropriate related position,so as to achieve the best uniform results.

**\* Manually installation or if necessary thermal glue are recommended.**

- Fuction:

YML01ED-CF70145H provides exceptional color mixing result with the highest efficiency through careful enginnering and precision manufacturing process.

## Usage and Maintenance

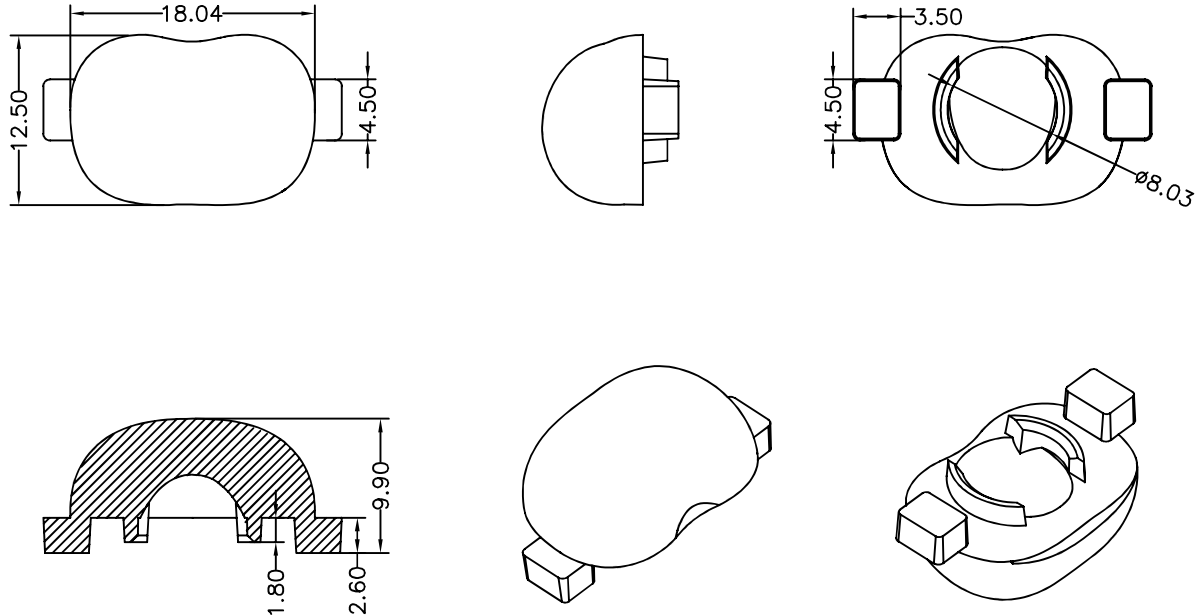
- 1.Clean lenses with mild soap and water and a soft cloth.
- 2.Don't use any commercial cleaning solvents on lenses,like alcohol.
- 3.Operating temperature -40℃~+110℃ (upper limit +120℃)
- 4.please handle or install lenses with wearing gloves,skin oils may damage lens or optical characteristic.

## Notes:

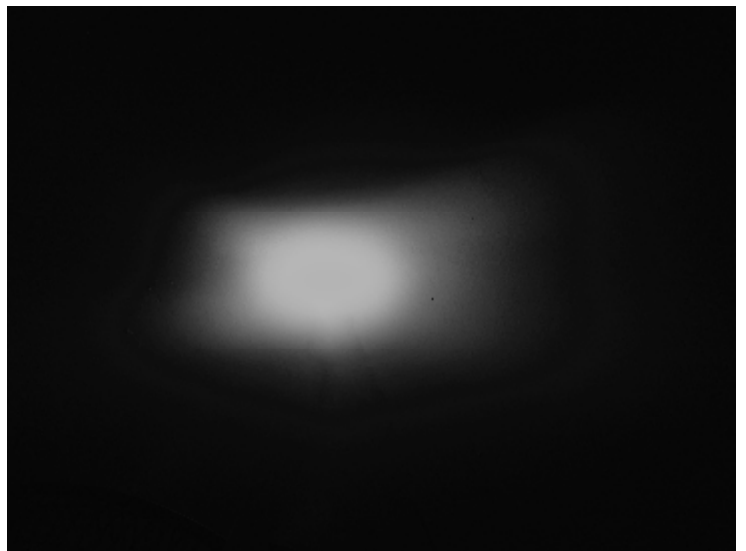
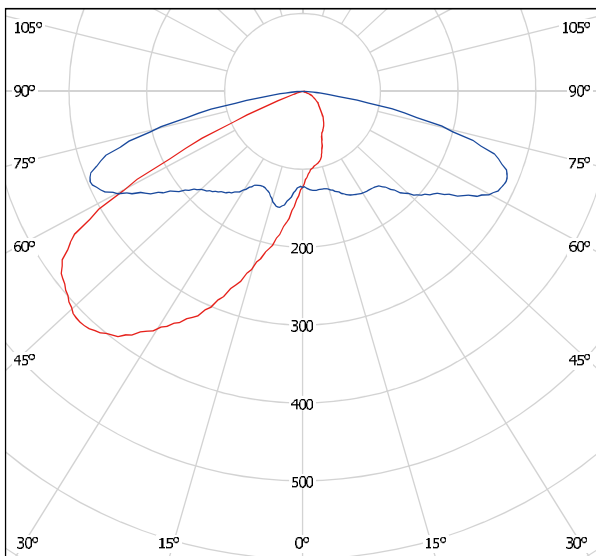
(1) Typical beam divergence will be affected by different LED manufacturers.



## 2D Drawings (unit:mm)



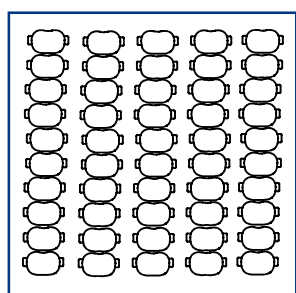
## Optical Characteristics (for 1LA5)



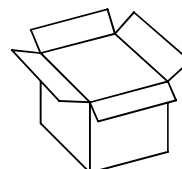
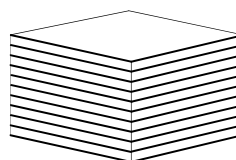


## Package Information

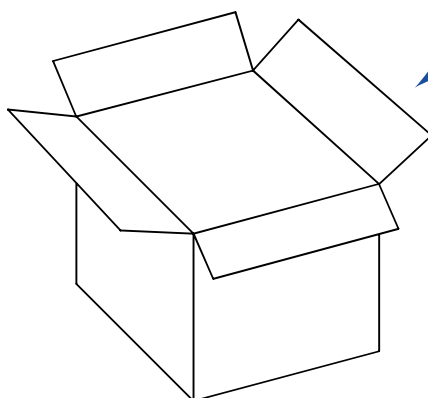
Item	Quantity	Total	Size (long*width* high)
Tray	50pcs/tray	50pcs	—
Inner box	11tray/inner box	550pcs	12.5*12.5*12.5 cm
Outer box	18 inner box/outer box	9900pcs	42.0*39.0*28.0 cm



50pcs/tray



550pcs/inner box



9900pcs/outer box



## Product Nomenclature

