



## YML01CR-CAxxF LENS



### PRODUCT DESCRIPTION

#### Features:

- High efficiency >93%
- Available in 7 beam pattern
- Optimized for uniform effects
- Lens material Optical grade PMMA
- Lens with holder

#### Typical applications:

- Stage Lighting
- Street Lights
- Decorative Light
- Down Light

### TABLE OF CONTENTS

General Information	.....2
Usage and Maintenance	.....2
2D Drawings	..... 3-9
Optical Characteristics (for 3535 led)	..... 3-9
Package Information	.....10
Product Nomenclature	.....11



## General Information (TJ = 25°C)

- Compatible Led Type:

The YML01CR-CAxxF single lens is optimized for 3535 led .

- Beam Angle Type:

An optimized profile integrate different front shape enabel the general of seven lens model:oval beam (15 deg;25 deg;40 deg;60 deg;10\*65deg;10\*65deg-B;10\*65 deg-C) <sup>(1)</sup>

- The Way to Assembly:

The lens should be assembled to the PCB board or MCPCB upon LEDs which provides the most appropriate related position,so as to achieve the best uniform results.

**\* Manually installation or if necessary thermal glue are recommended.**

- Fuction:

YML01CR-CAx F provides excep tional color mixing result with the highest efficiency through careful enginnering and precision manufacturing process.

## Usage and Maintenance

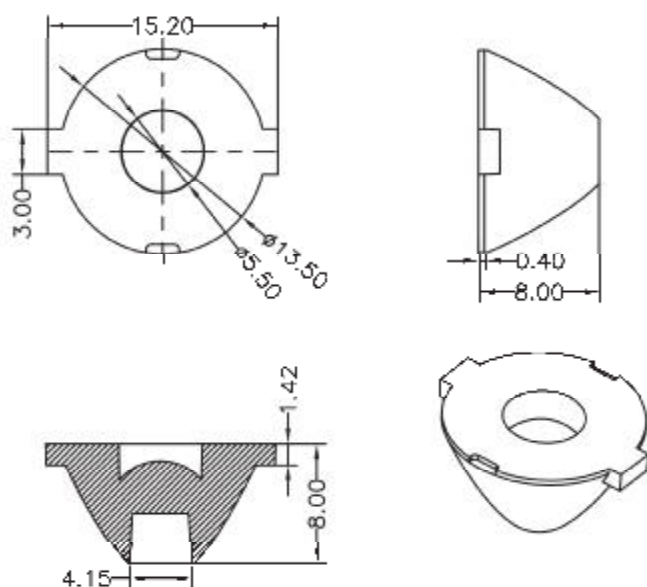
- 1.Clean lenses with mild soap and water and a soft cloth.
- 2.Don't use any commercial cleaning solvents on lenses,like alcohol.
- 3.Operating temperature -40℃ ~+80℃ (upper limit +90℃)
- 4.please handle or install lenses with wearing gloves,skin oils may damage lens or optical characteristic.

## Notes:

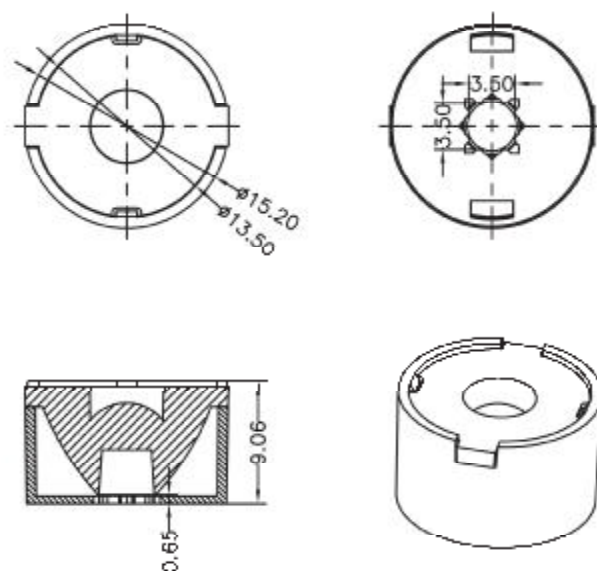
(1) Typical beam divergence will be affected by different LED manufacturers.



## 2D Drawings (unit:mm)

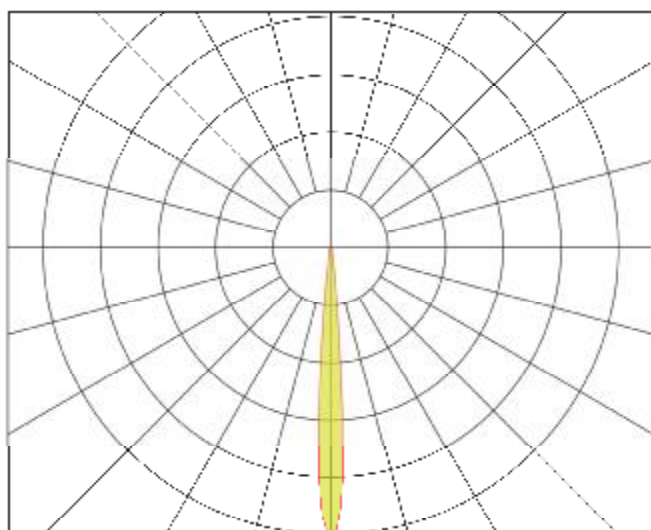


LENS

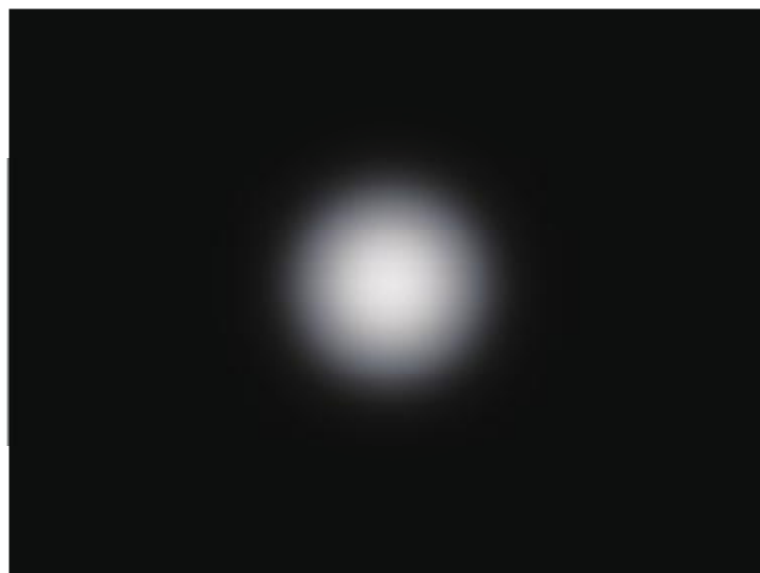


LENS WITH HOLDER

## Optical Characteristics (for 3535 LED)

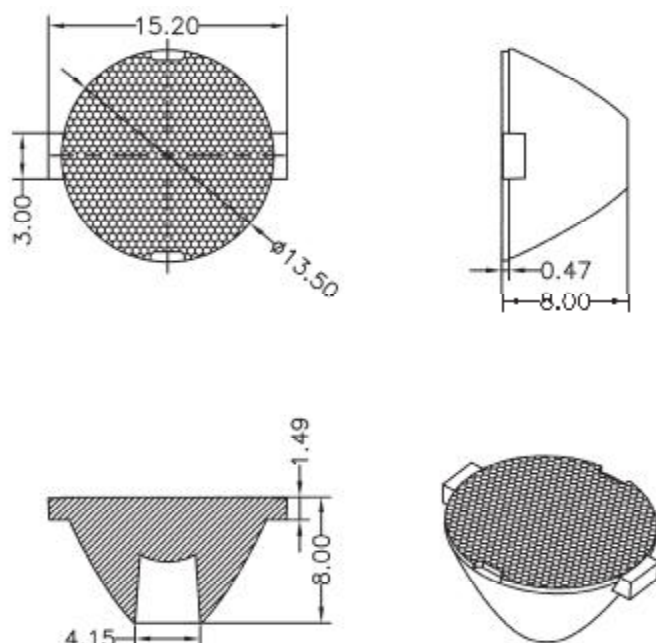


Note: The CREE XP-E LED emitter flux is 120lm @350mA

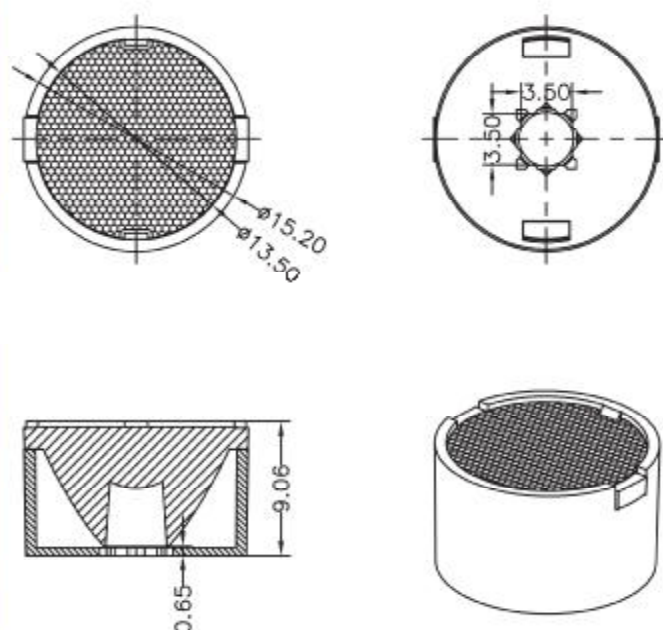




## 2D Drawings (unit:mm)

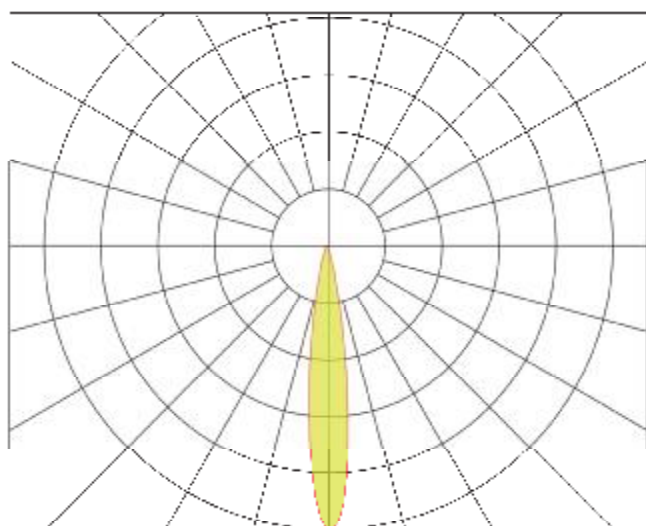


LENS

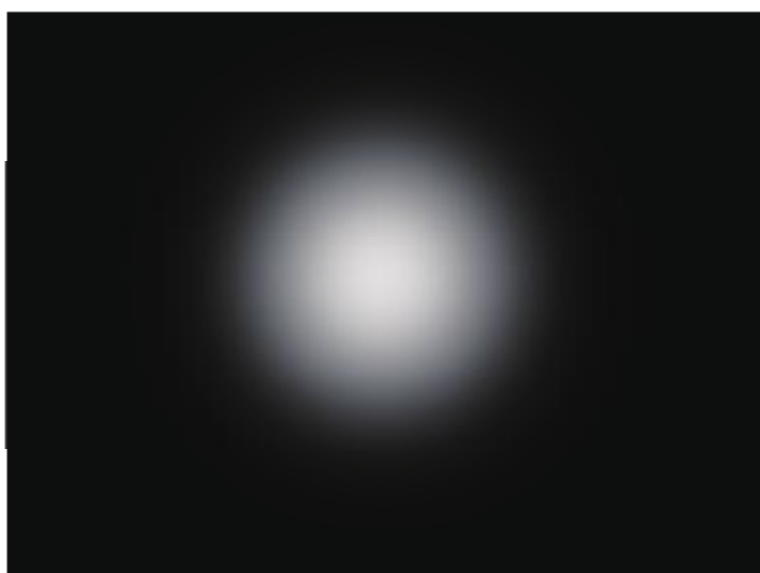


LENS WITH HOLDER

## Optical Characteristics (for 3535 LED)

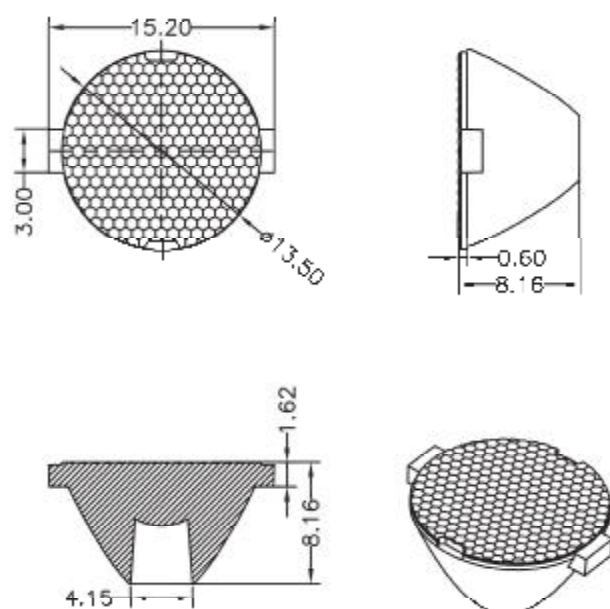


Note: The CREE XP-E LED emitter flux is 120lm @350mA

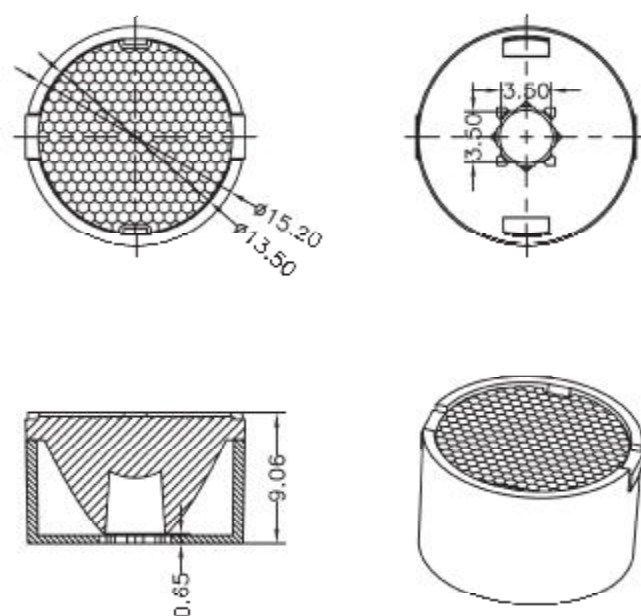




## 2D Drawings (unit:mm)

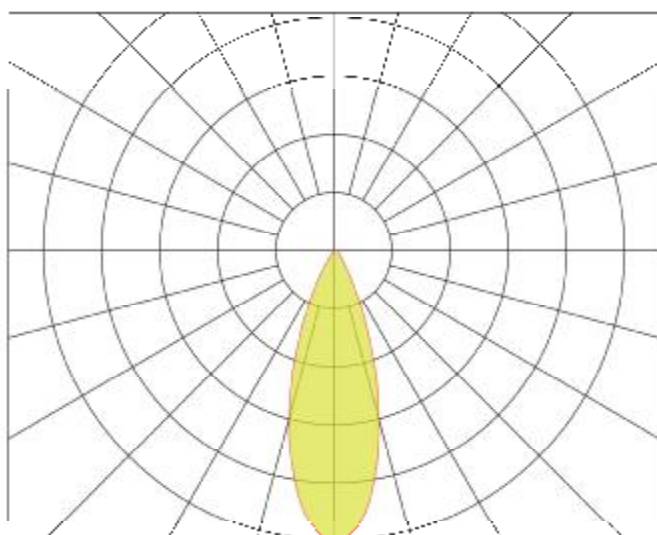


LENS



LENS WITH HOLDER

## Optical Characteristics (for 3535 LED)

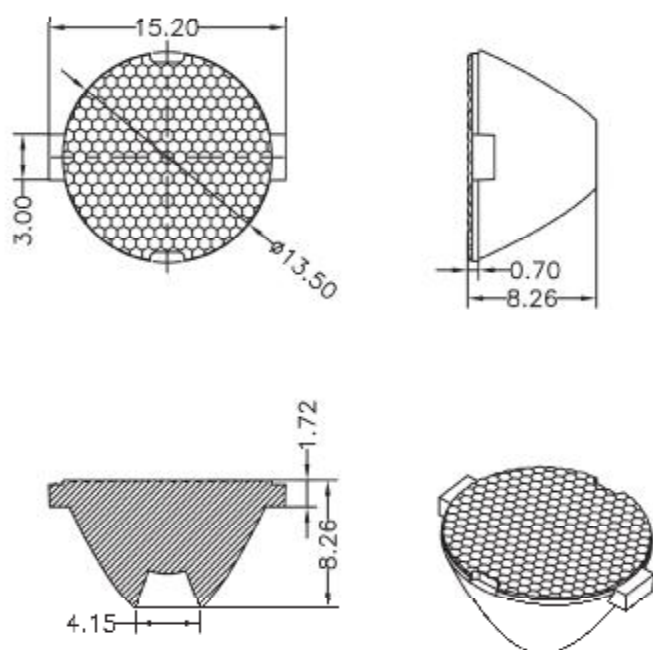


Note: The CREE XP-E LED emitter flux is 120lm @350mA

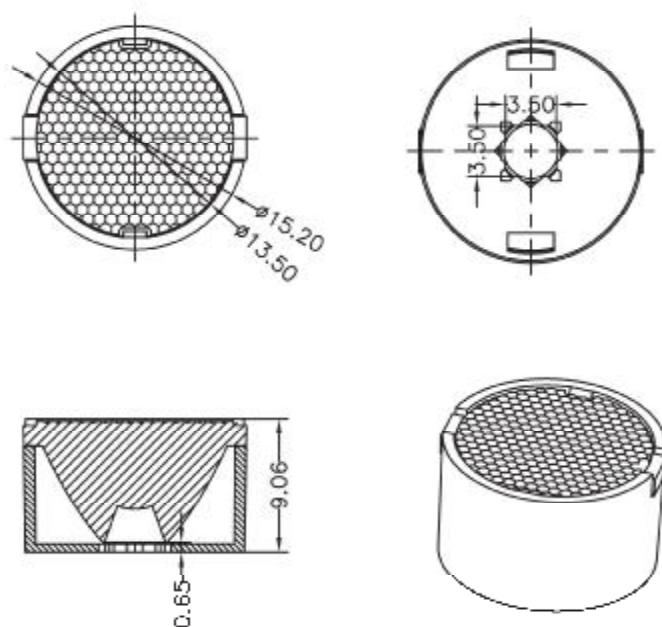




## 2D Drawings (unit:mm)

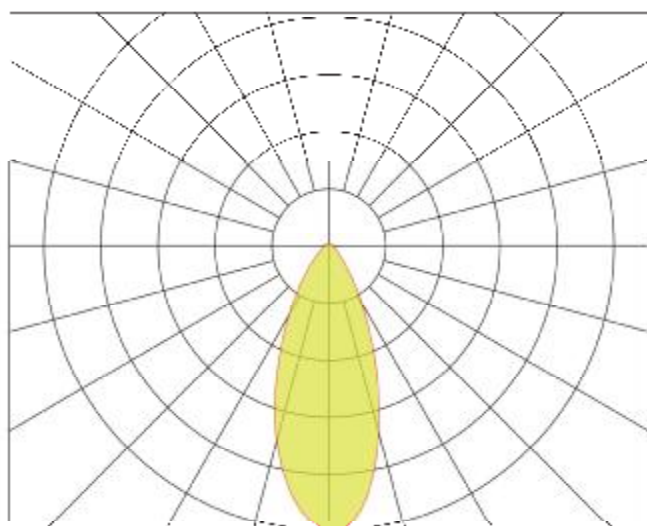


LENS



LENS WITH HOLDER

## Optical Characteristics (for 3535 LED)



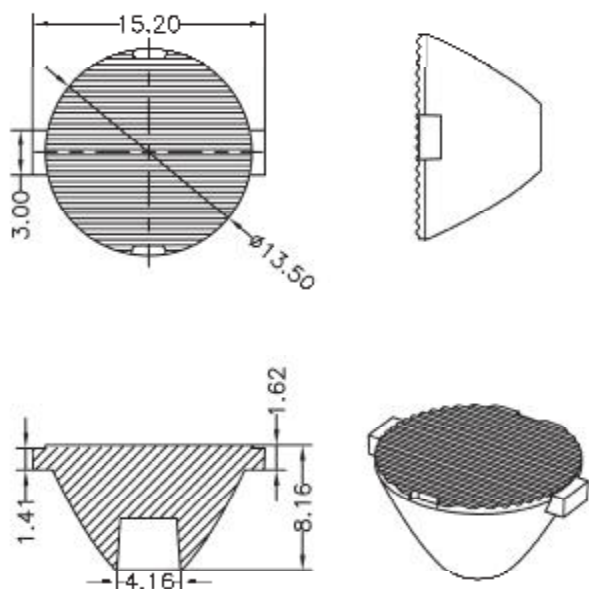
Note: The CREE XP-E LED emitter flux is 120lm @350mA



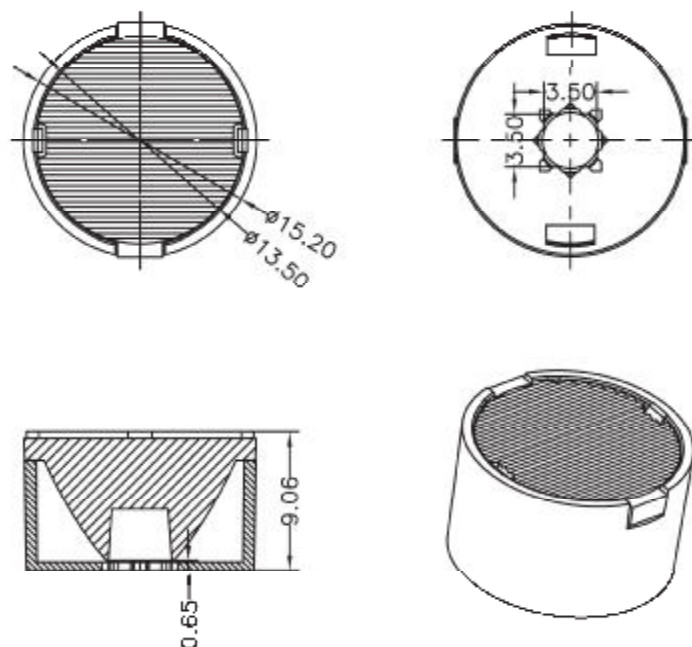




## 2D Drawings (unit:mm)

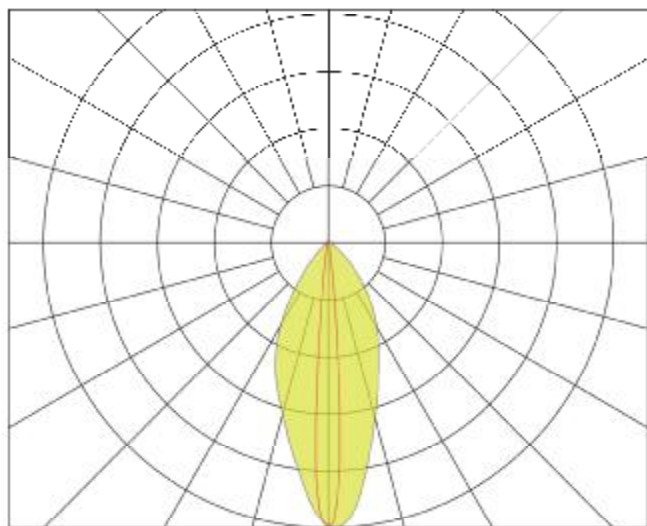


LENS



LENS WITH HOLDER

## Optical Characteristics (for 3535 LED)

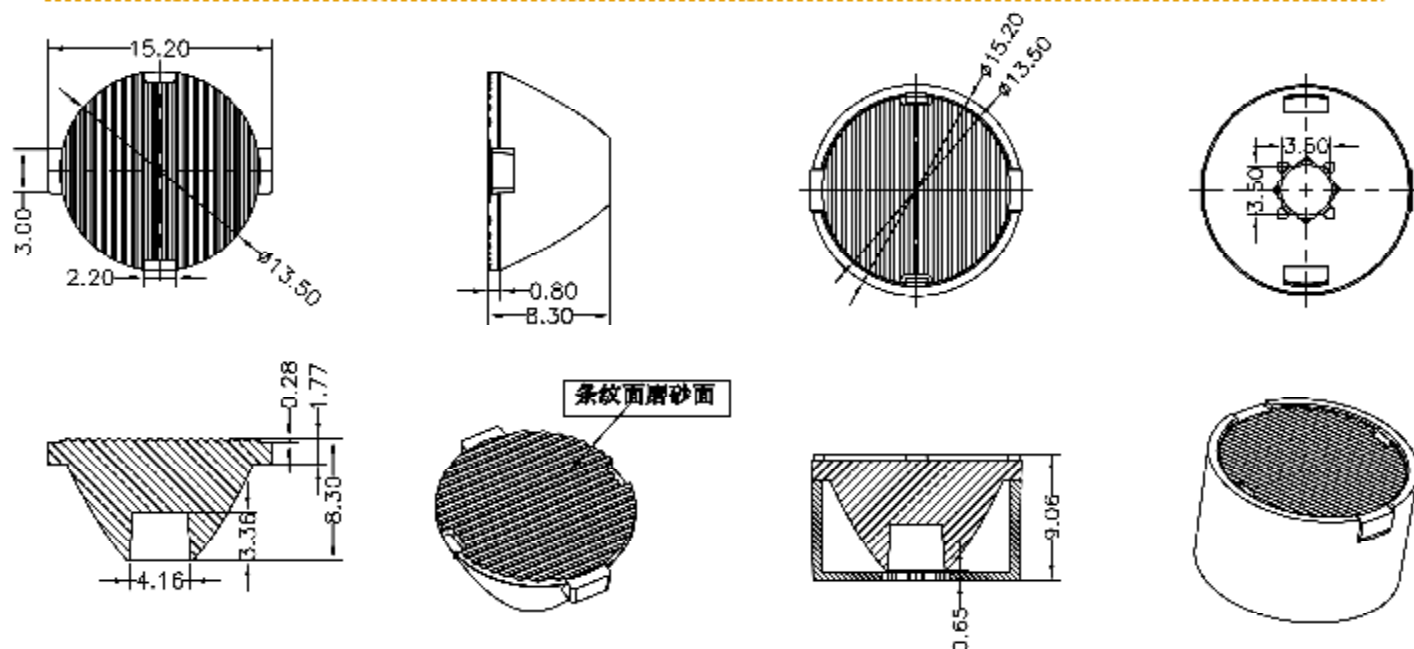


Note: The CREE XP-E LED emitter flux is 120lm @350mA





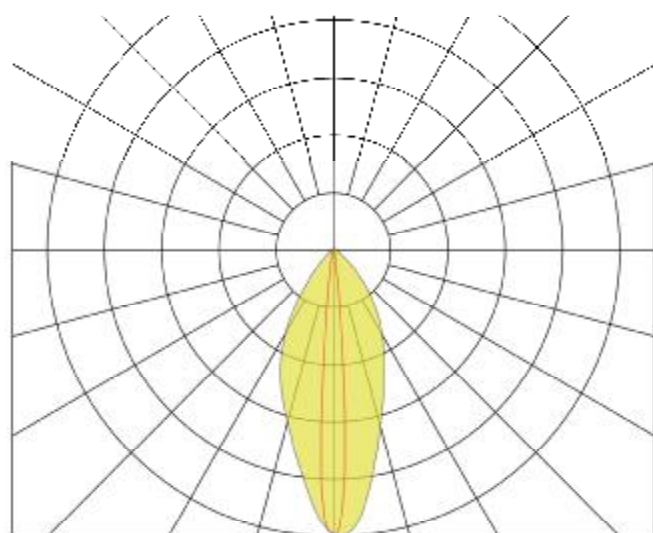
## 2D Drawings (unit:mm)



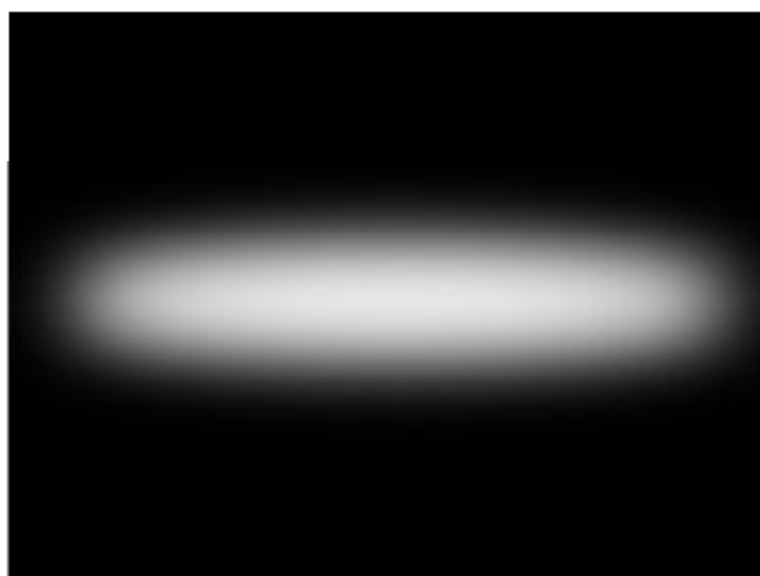
LENS

LENS WITH HOLDER

## Optical Characteristics (for 3535 LED)



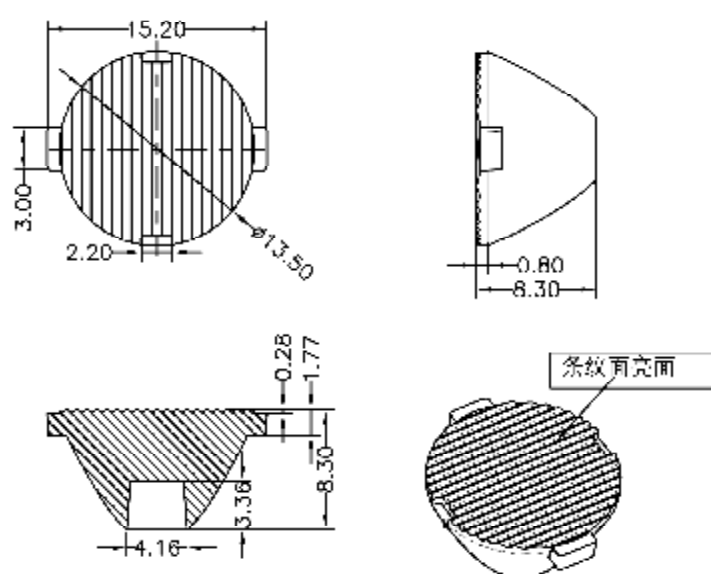
Note: The CREE XP-E LED emitter flux is 120lm @350mA



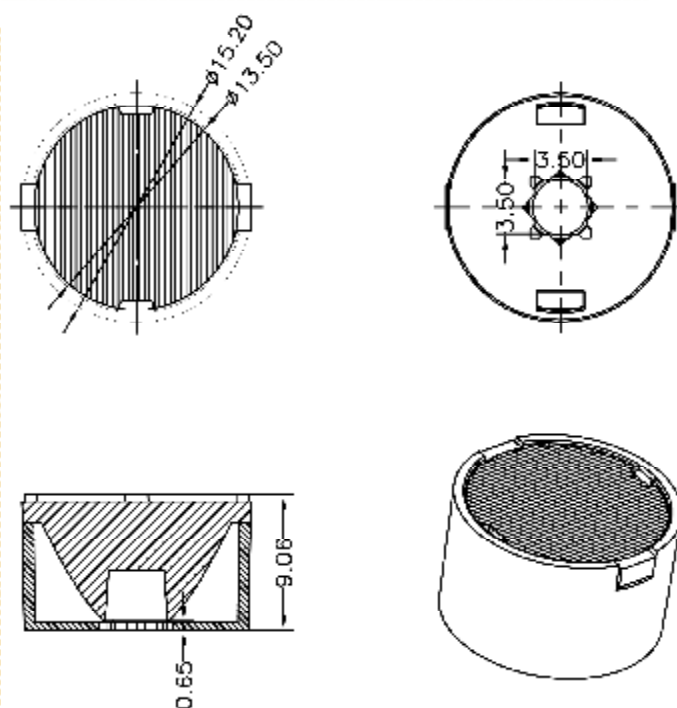




## 2D Drawings (unit:mm)

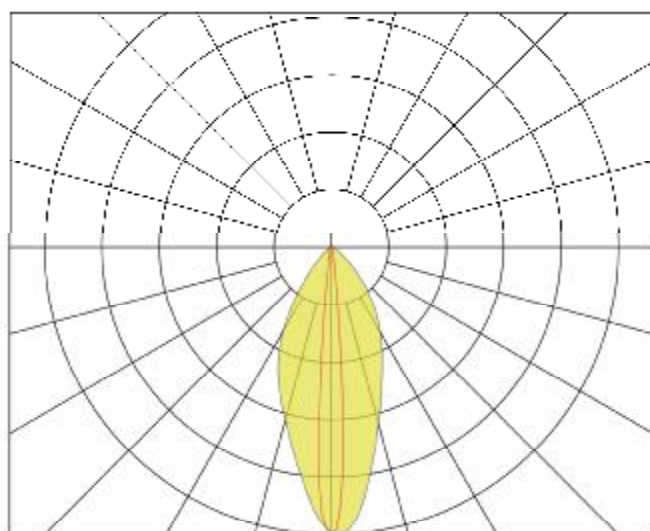


LENS

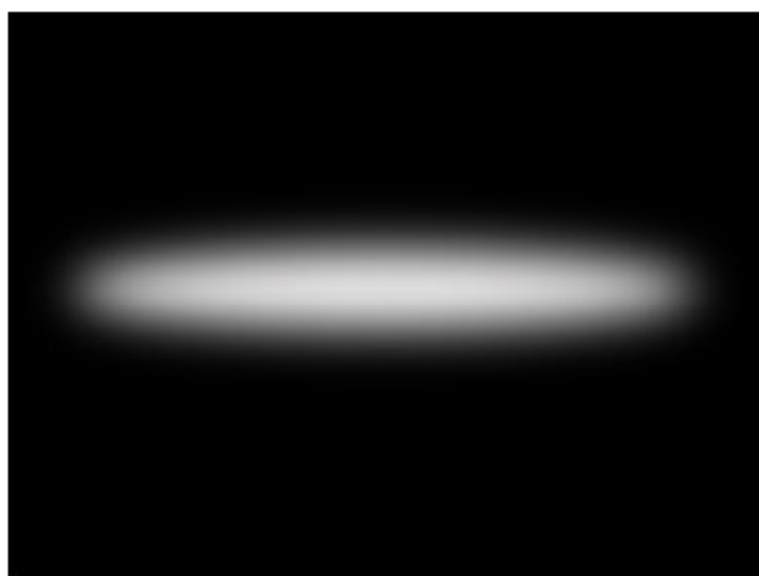


LENS WITH HOLDER

## Optical Characteristics (for 3535 LED)



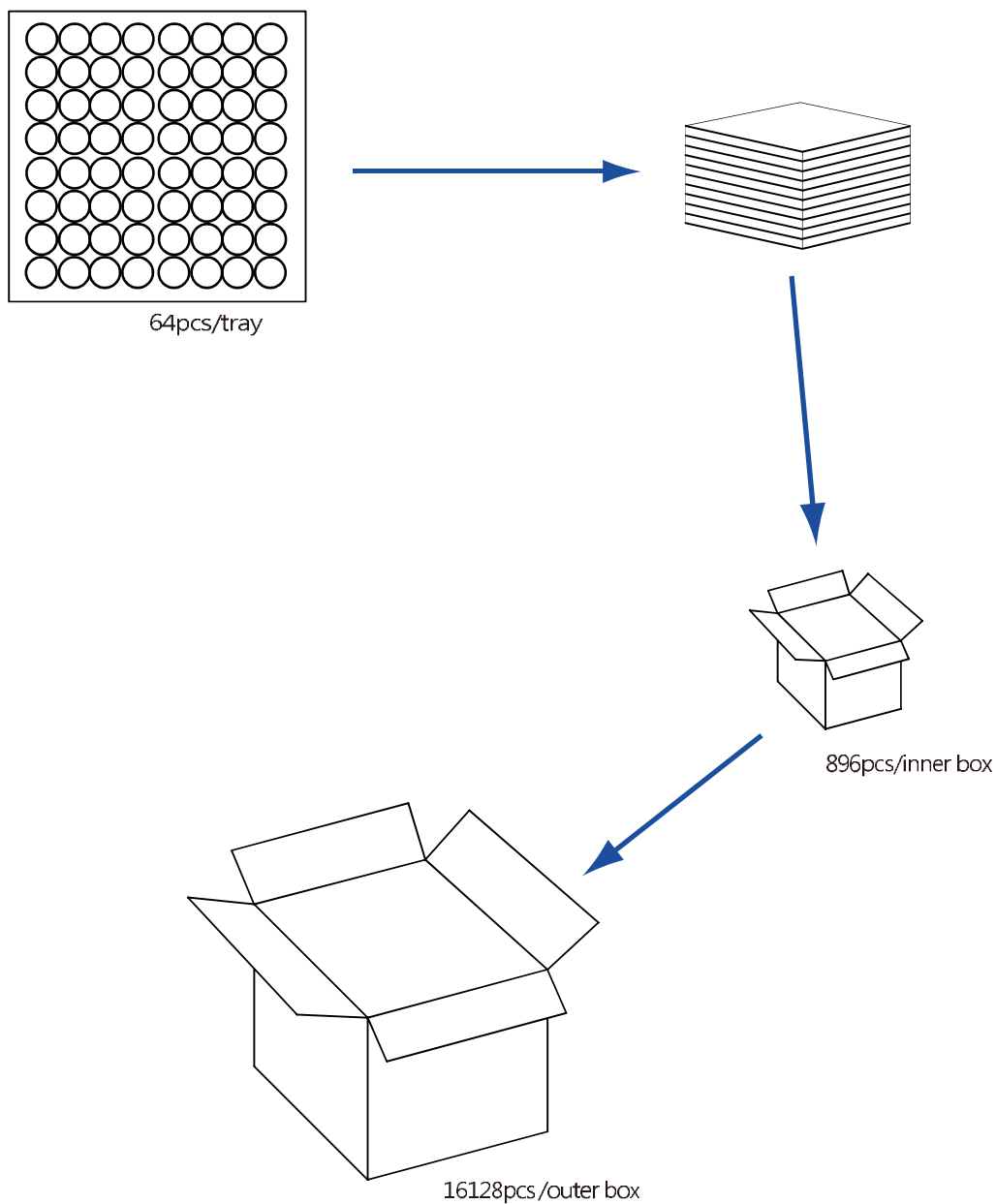
Note: The CREE XP-E LED emitter flux is 120lm @350mA





## Package Information

Item	Quantity	Total	Size (long*width* high)
Tray	25pcs/tray	64pcs	—
Inner box	14tray/inner box	896pcs	12.5*12.5*12.5 cm
Outer box	18 inner box/outer box	16128pcs	42.0*39.0*39.0 cm





## Product Nomenclature

